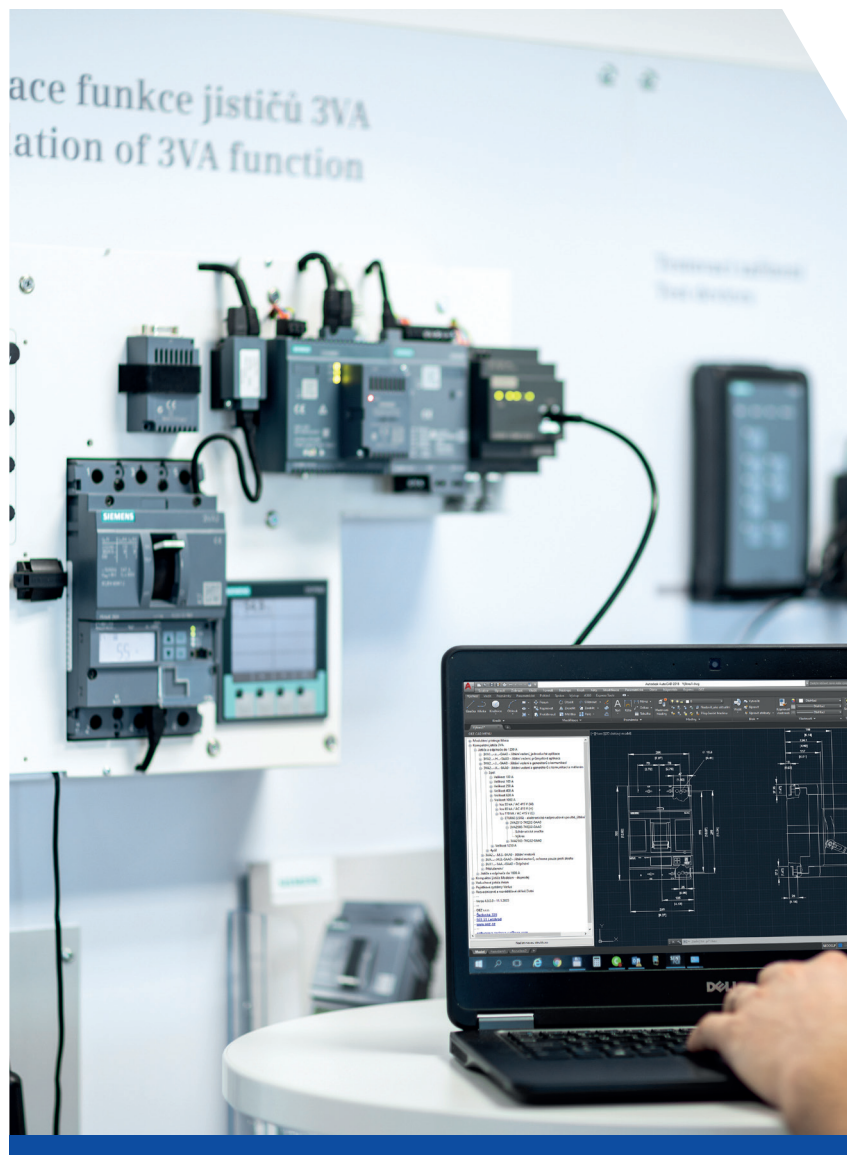




Modern technology
and personal approach. Of course. OEZ



III/2023

OEZ CAD Menu

AutoCAD Extension Installation Instructions

OEZ CAD Menu Compatibility – NOTICE

The OEZ CAD Menu is developed only for full versions of AutoCAD products and their extensions (AutoCAD Electrical, AutoCAD Mechanical, ...).

We recommend to use our extension only with the above mentioned products.

AutoCAD LT versions **do not allow** importing extensions, so it **is not possible** to install OEZ CAD Menu in them.

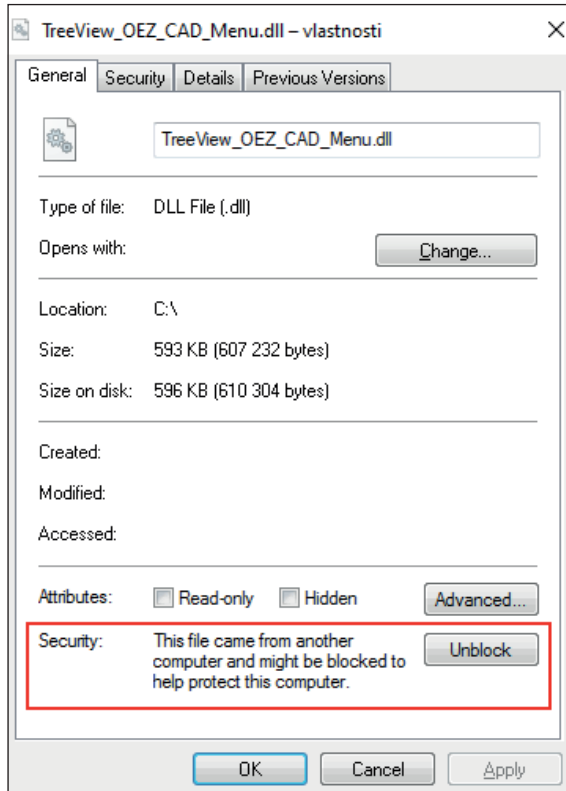
Correct functionality with other 2D design and construction programs (BricsCAD, Solid Edge, ...) **cannot be guaranteed** and installation **is not recommended**.

Alternative to the OEZ CAD Menu

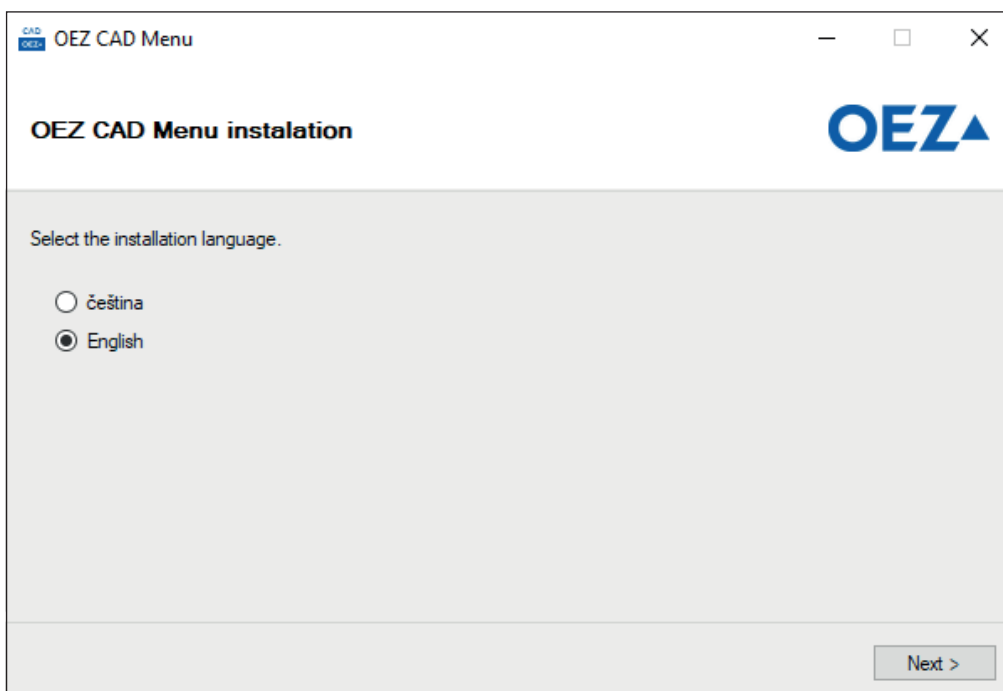
In case you do not have the full version of AutoCAD or one of its extensions and therefore cannot install OEZ CAD Menu, you can use the alternative way to search for 2D documents using the attached Excel spreadsheet („**overview_of_drawings.xlsx**“) and insert the drawings via links into your 2D document software.

OEZ CAD Menu Installation

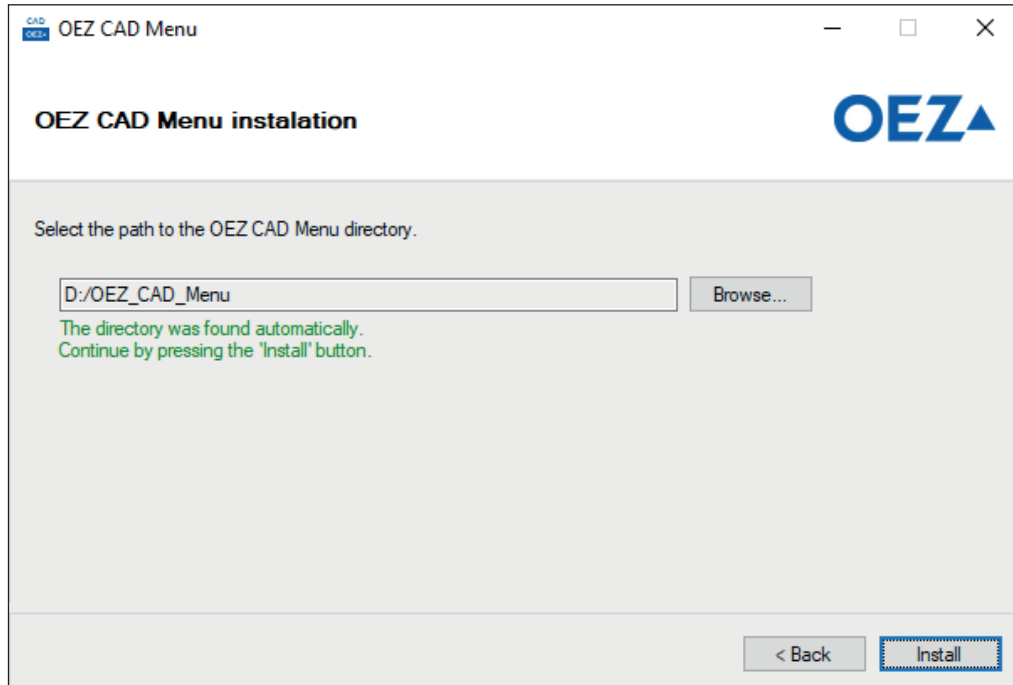
1. Extract the "OEZ_CAD_Menu" directory and open the properties of the "TreeView_OEZ_CAD_Menu.dll" file. On the "General" tab, check if the dll library is blocked. If it is, check the "Unblock" box and confirm with the "Apply" button.



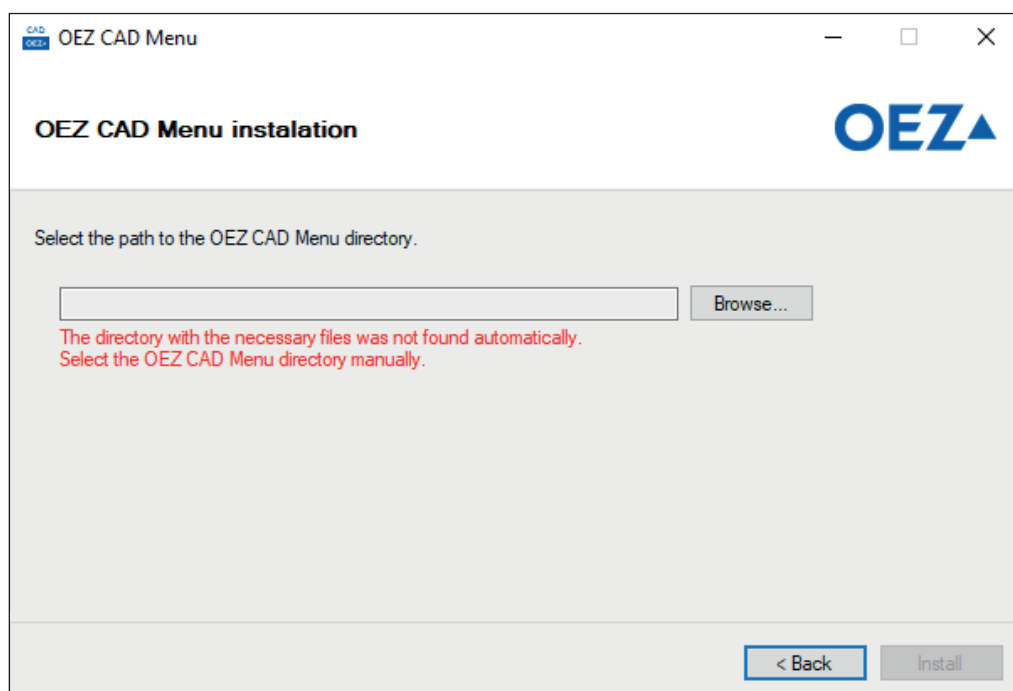
2. From the extracted "OEZ_CAD_Menu" directory, run the installation file "OEZ_CAD_Menu_install.exe".
3. Select the language for the installation and click "Next".



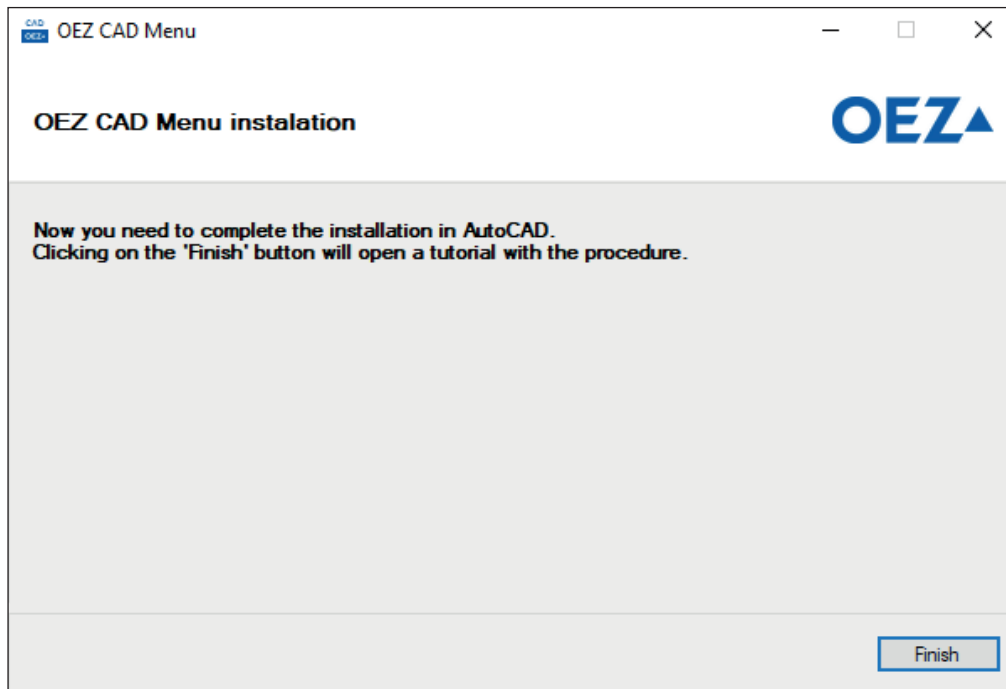
4. Locate the path to the "OEZ_CAD_Menu" directory:
 - a. If you run the installation file directly from the "OEZ_CAD_Menu" directory (recommended), the program will find the path to the files automatically. In this case, a green message is displayed and the installation can be started by clicking "Install".



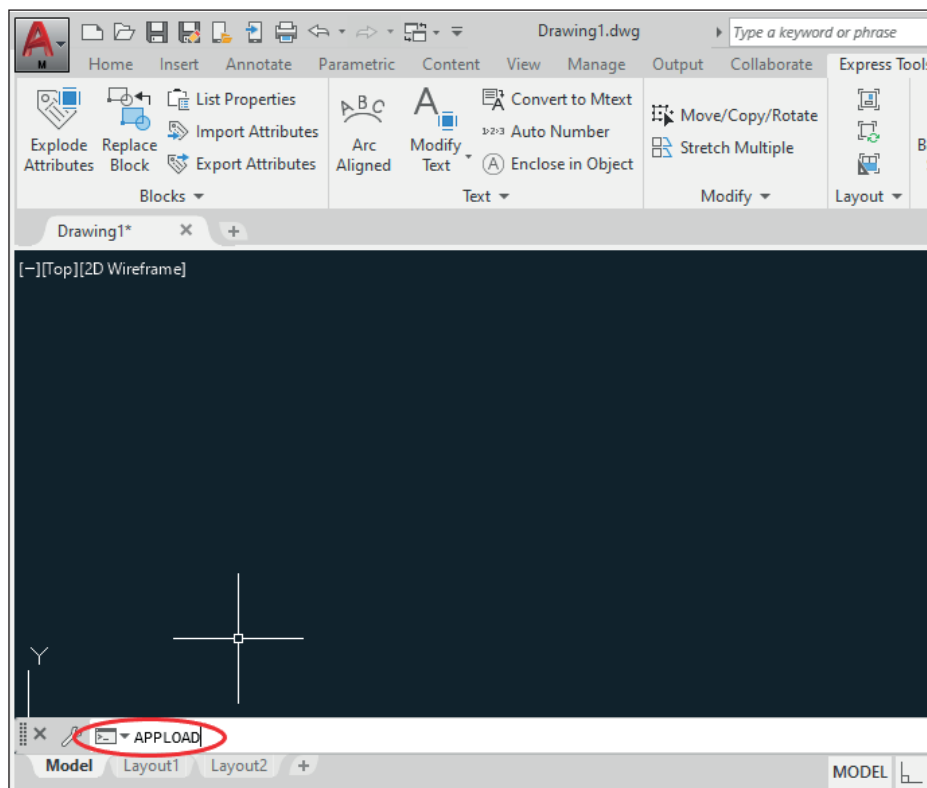
- b. If you move the installation file from the "OEZ_CAD_Menu" directory (not recommended), the necessary files will not be found. In this case, the path to the directory must be selected manually by clicking "Browse...". Please note, it is necessary to select the extracted directory called "OEZ_CAD_Menu". After successfully uploading all the necessary files, you can continue by clicking "Install".



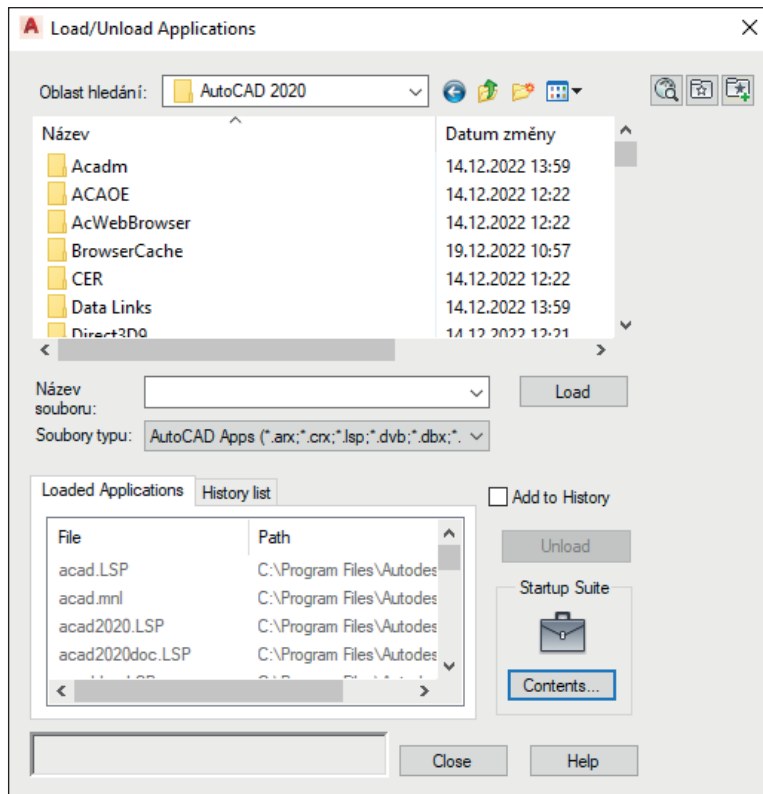
- Now you can click “Finish” and complete the first step of the installation. The next step is setting the AutoCAD software.



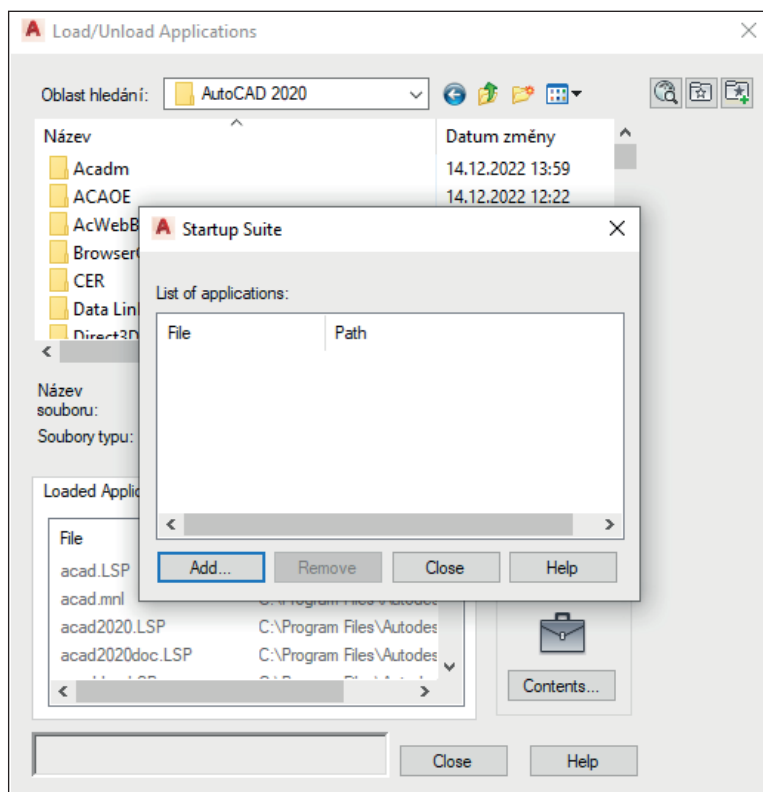
- After starting AutoCAD, enter “Appload” in the command line to call the “Load/Unload Applications” sub-window.



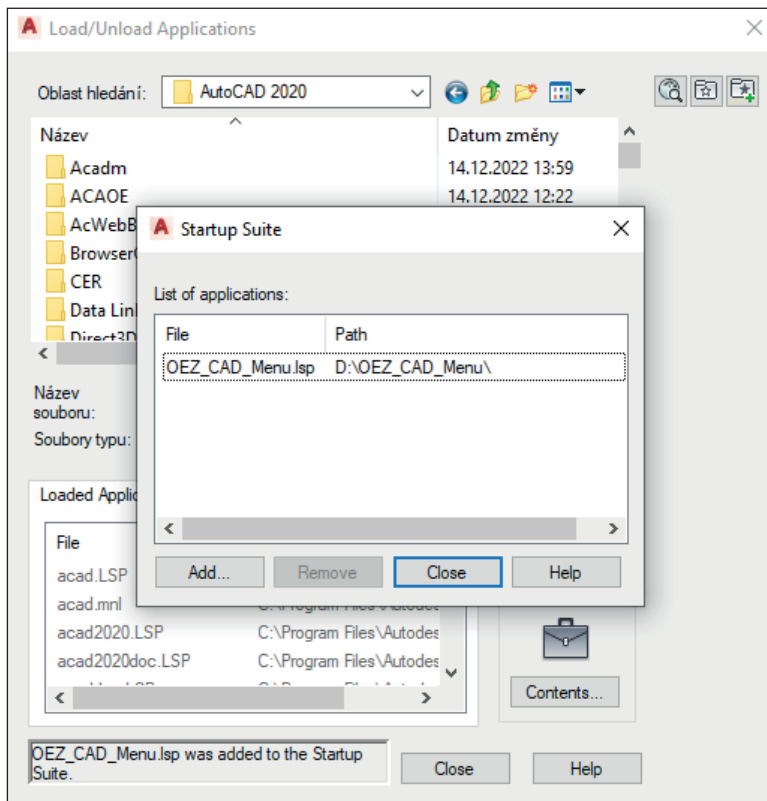
- Then click “Contents...” in the bottom right corner of the sub-window. This will open another sub-window called “Startup Suite”.



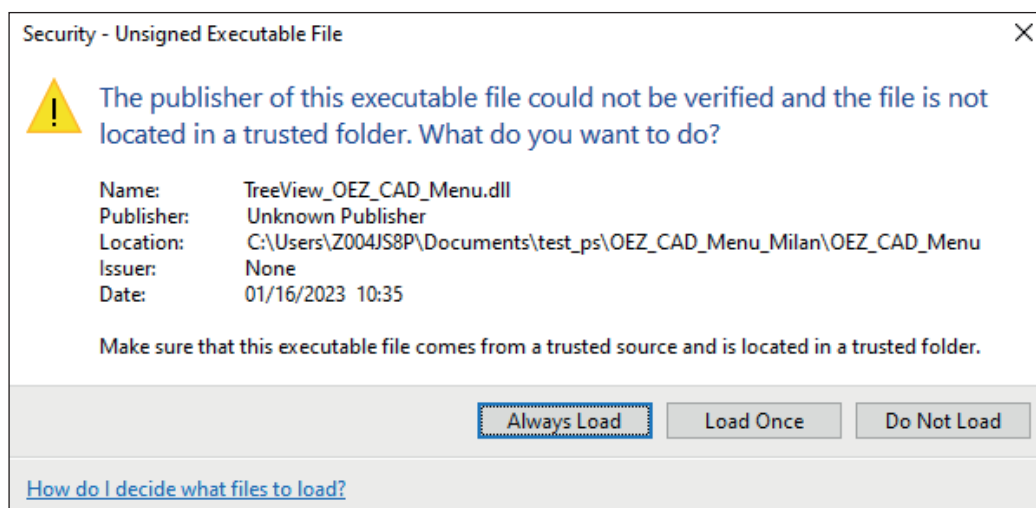
- There, click “Add...”, go to the location where you saved the “OEZ_CAD_Menu” directory and locate the file in AutoLISP format named “OEZ_CAD_Menu.lsp”.



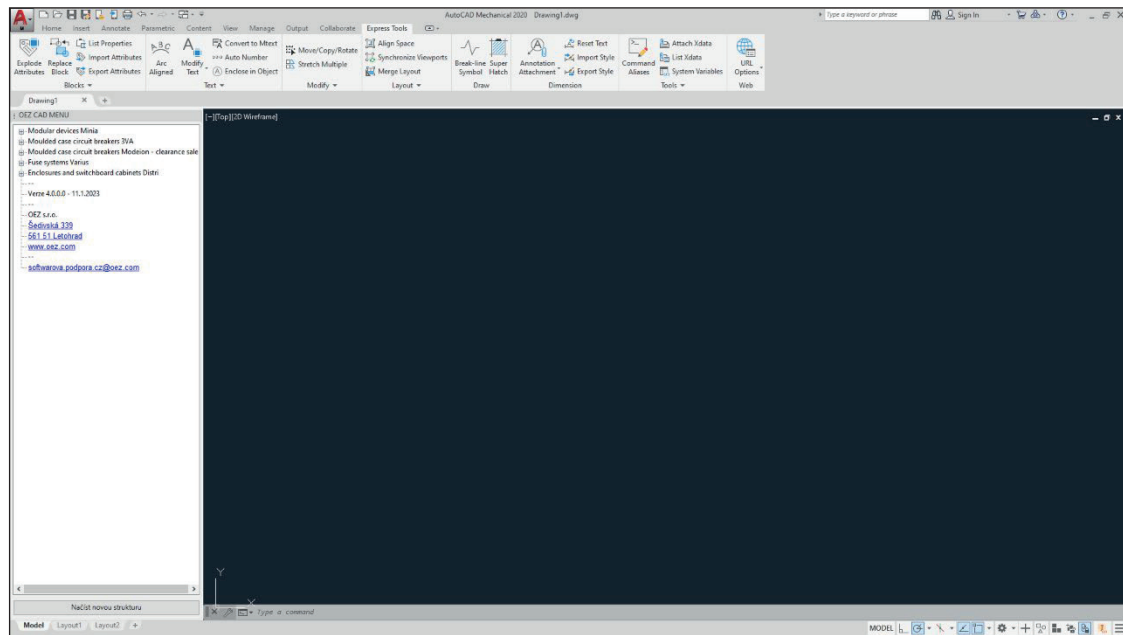
9. Click “Open” and close the parent sub-windows by clicking „Close“.



10. Finally, **restart AutoCAD**. After restarting, you will be prompted to verify the credibility of the extension files. Here, you can click “Always Load” to confirm the file credibility and save the AutoCAD setting. This way, the window will not show again the next time you run the software.

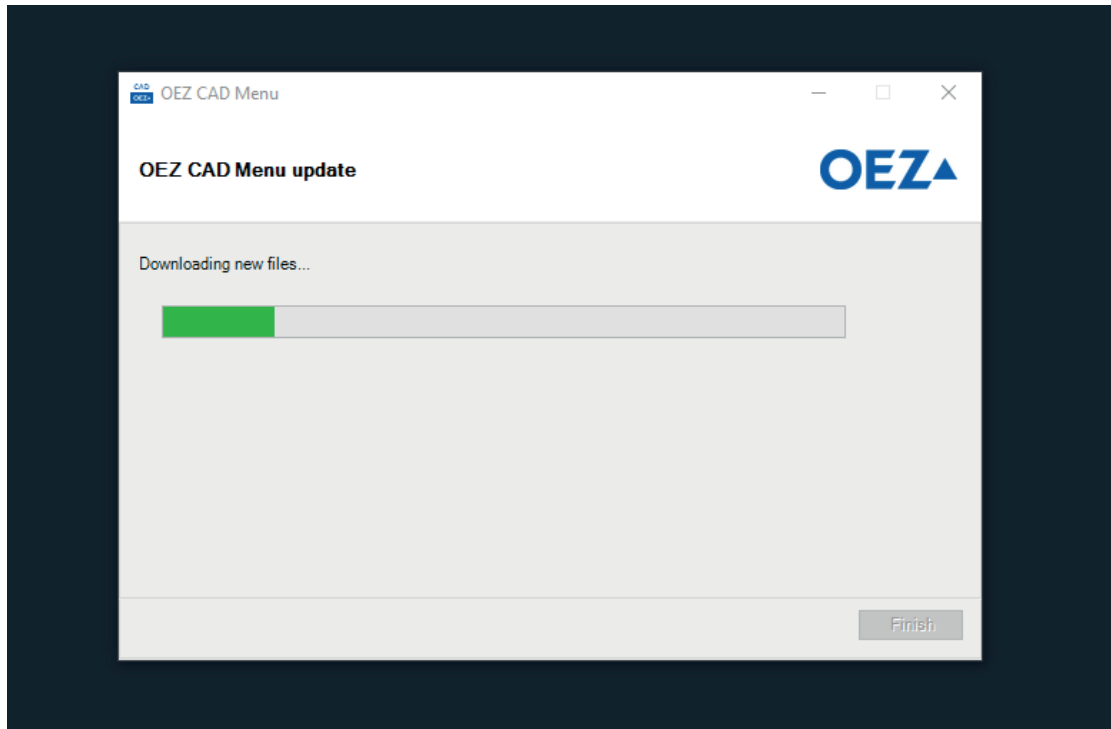


11. After loading, the pinned OEZ CAD Menu is displayed on the left side.



Automatic update of the OEZ CAD Menu

Since version 4.1.0.0, the OEZ CAD Menu also includes an update function that checks if an update is available every time you open AutoCAD. If a newer version is found and the user agrees, the update wizard will be run. Do not turn off AutoCAD during the update process, it will be terminated automatically. After the wizard is finished, AutoCAD will be started again.



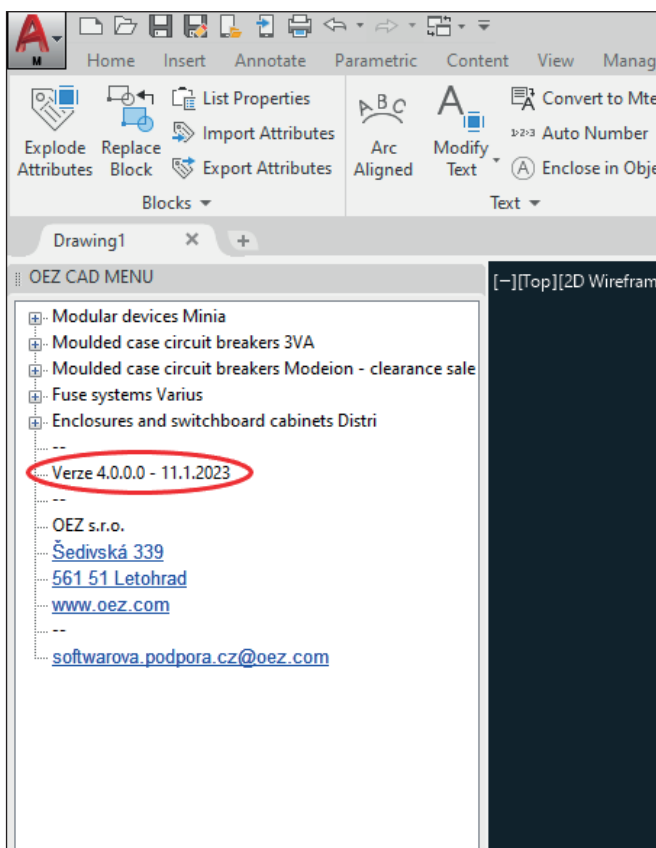
Complete update of the OEZ CAD Menu

On our web site, you can check if your OEZ CAD Menu is up to date. Reference:

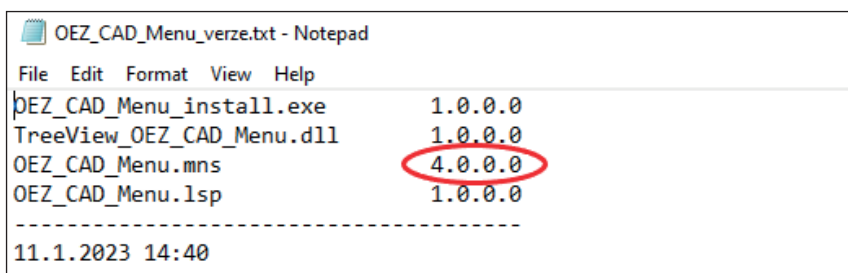
<https://www.oez.com/technical-support-software-support/oez-cad-menu> . Here, you can find a ZIP folder called "OEZ CAD Menu version X.X.X.X – zip", where X is the current extension version.

If you want to find out the existing extension version, there are 2 ways to do it.

1. In AutoCAD in the OEZ product structure:



2. In the information file called "OEZ_CAD_Menu_version.txt" in the "OEZ_CAD_Menu" directory from where you installed the extension (line OEZ_CAD_Menu.mns):



Move the files from the newly downloaded extension to the directory with the older version of OEZ CAD Menu and replace the existing files with new ones.

Updating only the Structure and Documents

By clicking "Upload New Structure" in the bottom left corner of the OEZ CAD Menu, you can limit the update to the file with the structure ("OEZ_CAD_Menu.mns") and the document directory ("DWG_DXF"). After successful implementation of the changes, you must first choose the file with the structure and then also the document directory. To ensure complete compatibility, updating the whole directory is recommended (see the "Complete update of the OEZ CAD Menu" instructions above).

OEZ Support

If you encounter an error or have any questions, please contact us at the following email address (if possible, please attach an error message or screenshot):

softwarova.podpora.cz@oez.com

Level Description Table – General

Levels	Use
OEZ_KOT	Quotation and plotting lines, index rings, ovals around quotations
OEZ_SRF	Threads, breaks, hatchings
OEZ_OSY	Axes
OEZ_VYP	Descriptions, numberings
OEZ_DRS	Dimensions, roughness marks
OEZ_NEH	Invisible edges
OEZ_VYK	Drawings, frames, scales, indices at drawing numbers
OEZ_NAZ	Drawing numbers, titles, frames
OEZ_POS	Sections, details, descriptions of positions in drawings
OEZ_TAN	Tangent edges
OEZ_OBV	Instrument circuits
OEZ_ATR	Attributes

Level Description Table – DISTRI Distribution Boards and Switchboard Cabinets

Levels	Use
OEZ_KOT_DV	Dimensions – switchboard door
OEZ_KOT_KR-PS	Dimensions – switchboard bottom sliding flanges
OEZ_KOT_ML	Dimensions – modular rails
OEZ_KOT_ML-DR	Dimensions – modular rail holders
OEZ_NEH_DV	Invisible edges – switchboard door
OEZ_OSY_DV	Axes – switchboard door
OEZ_OSY_ML	Axes – modular rails
OEZ_OSY_ML-DR	Axes – modular rail holders
OEZ_VYK_DV	Drawings – switchboard door
OEZ_VYK_KR-PS	Drawings – switchboard bottom sliding flanges
OEZ_VYK_KR-CL	Drawings – complete switchboard bottom flanges
OEZ_VYK_KR-MSS	Drawings – vertical outer covers of modular system (crosswise)
OEZ_VYK_KR-MSH	Drawings – vertical outer covers of modular system (in depth)
OEZ_VYK_ML	Drawings – modular rails
OEZ_VYK_ML-DR	Drawings – modular rail holders

File Descriptions

Name generator is used for file descriptions.

File names are created according to the following key:

1st character	Group number
1...	Fuse systems
2...	Moulded case and air circuit breakers
3...	House wiring
4...	Switchboard cabinets
5...	Contactors
6...	Siemens products

2nd character	Document type
S ...	Wiring diagram and schematic mark
V ...	Drawing

3rd–4th character Identification of view, panel, schematic mark, wiring diagram

T_...	Top view
F_...	Front view
L_...	Side view (left side view)
R_...	Side view (right side view)
B_...	Rear view
I_...	3D view
D_...	Bottom view
N_...	Others
P_...	Front panel
S_...	Schematic symbol
C_...	Wiring diagram
V_...	Drilling diagram
A_...	View in bottom of cabinet
M_...	Siemens product

The first four characters (including the underscore) are used by all groups according to the same macro.

The following markings are adapted to the requirements of the individual construction groups.

5th–Xth character Instrument type

E.g. **PN, PHN, PLN, SPV, FH, VS-LTL, GOV-LTL**, etc.

Next character Size identification

E.g. **000, 01, 00/3, 4a**, etc.

Last two characters Underscore and change index identification

E.g. **_a, _b**.

The last two characters are only used for changed drawings, the initial versions do not contain them.

Examples:

1VF_PN2.dwg

2SC_BA511_935_936.dxf

2VF_MPBL_a.dwg

3VF_LSN-2_b.wmf

--- addendum ---

BA 511, MODEION, ARION:

The first five characters remain the same and follow the task setting (example:

2VF_BA511_33_character 6789), the following four

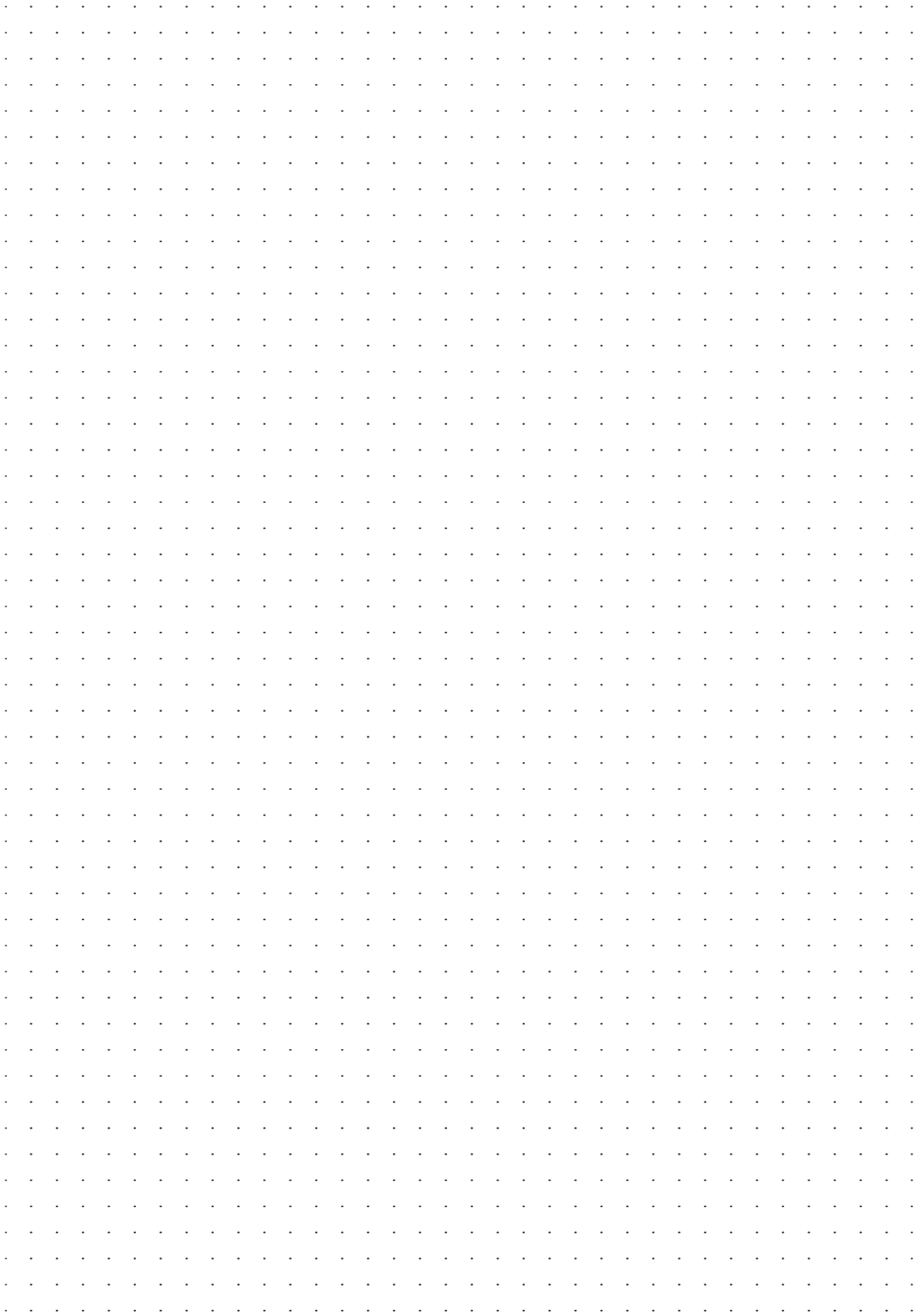
characters define:

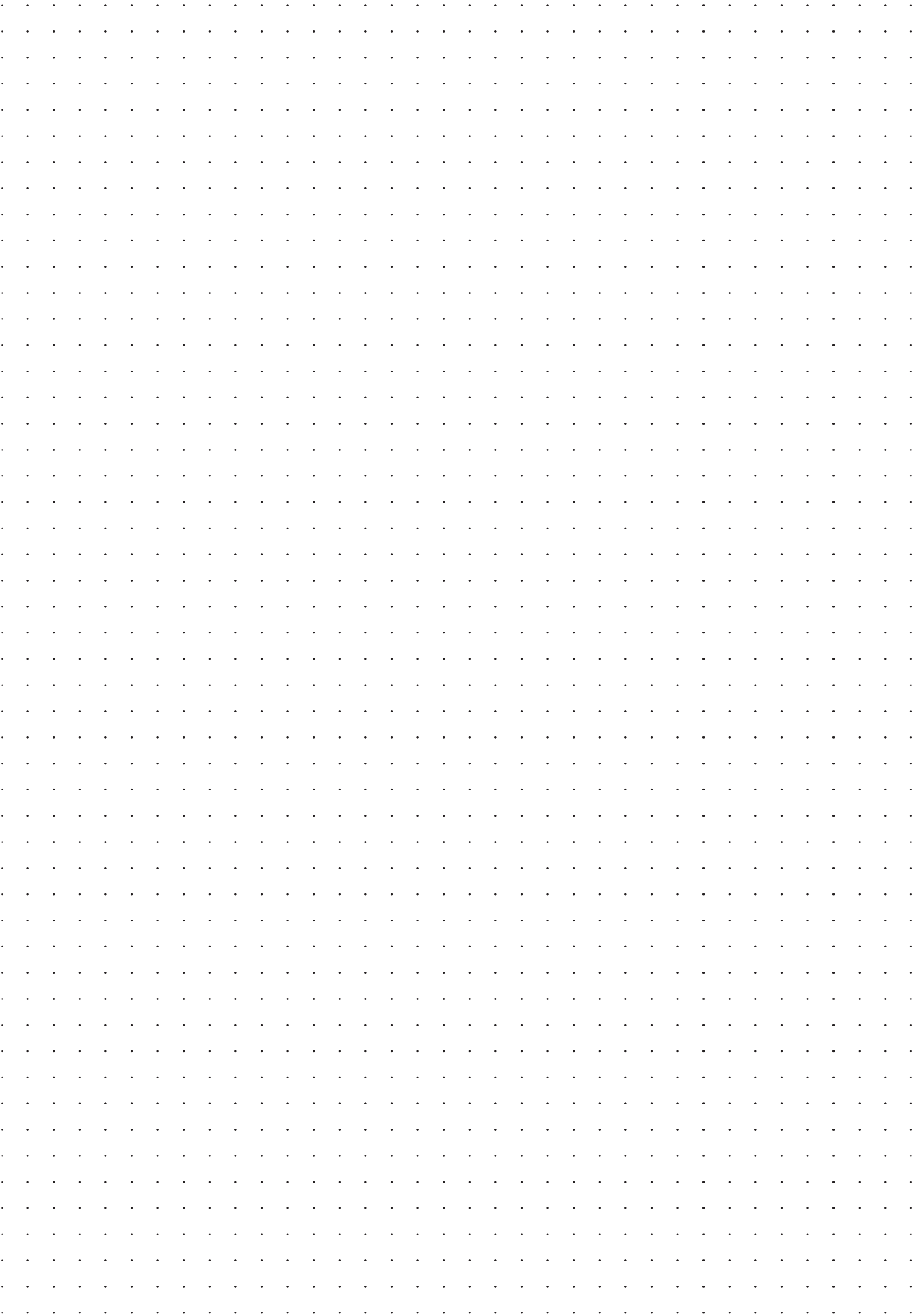
6th character	design type
P	Fixed design
O	Plug-in design
H	Withdrawable design

7th character	Feed type
P	Front feed
Z	Rear feed
S	Front and rear feed
X	No feed
H	Rear vertical
R	Rear flanged
PDIN	Front feed with one or two rows of openings according to DIN 43673

8th character	Drive type
C	Manual front drive
S	Manual front drive, adjustable lever
B	Manual side drive
T	Manual side drive, adjustable lever
M	Motor drive
X	No drive

9th character	Coverage
10	IP10
20	IP20
00	(No coverage)





OEZ s.r.o.
Šedivská 339
561 51 Letohrad
Czech Republic

E oeztrade.cz@oez.com
T +420 465 672 111
W www.oez.com





Any changes reserved

www.oez.com

